

Site Applicability

BC Women's Maternal Newborn Program

Purpose

This is an essential order set used to manage HIV in the setting of labor and delivery, for the purpose of preventing perinatal HIV transmission.

Developed By

BCW Maternal Newborn Program – Department Head, OBGYN

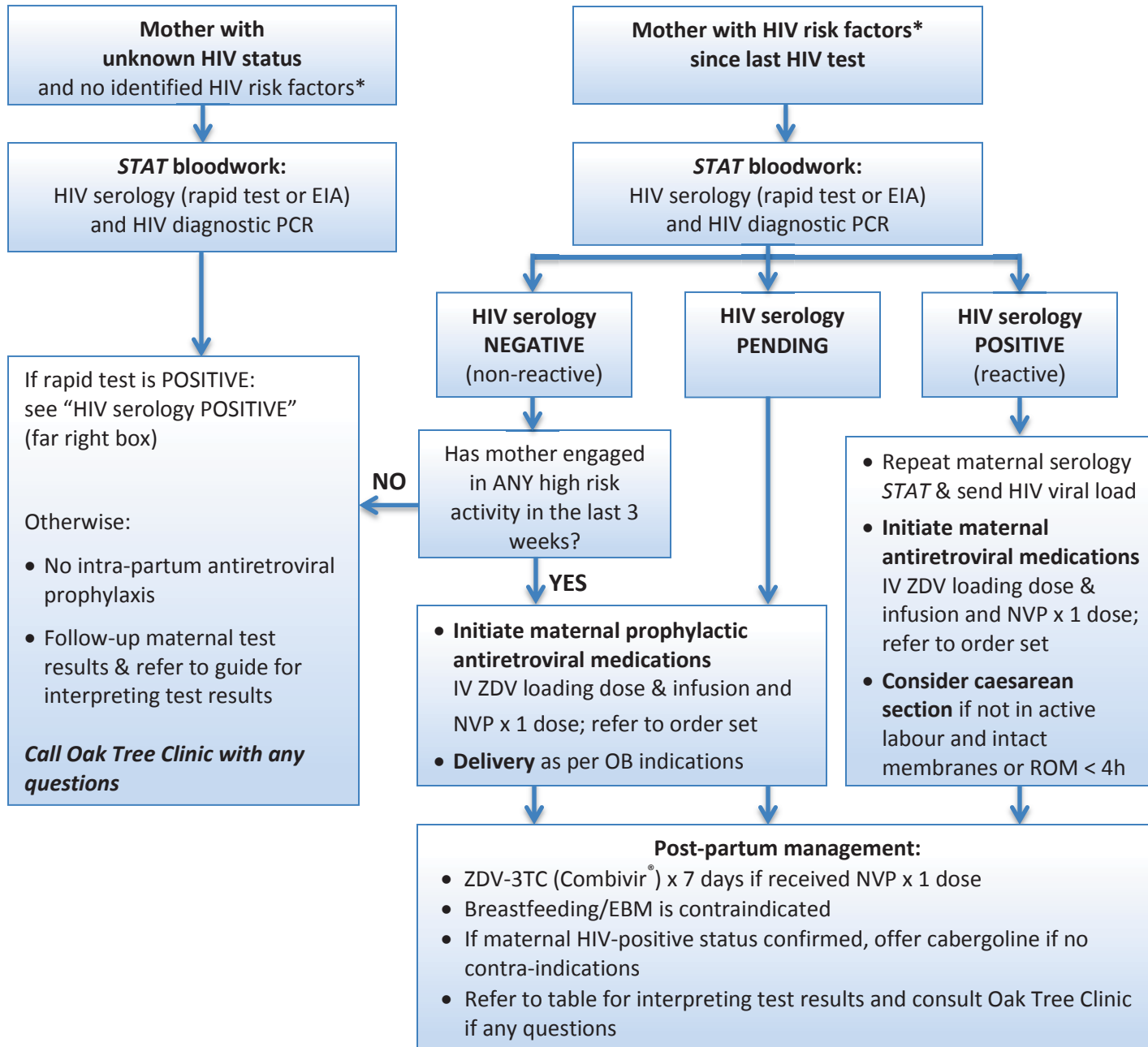
Version History

DATE	DOCUMENT NUMBER and TITLE	ACTION TAKEN
14-Dec-2024	C-06-01-60840 Intra-Partum Management Woman With Unknown HIV Status, Or HIV Risk Factors Since Last Test	Approved at: Pharmacy, Therapeutics and Nutrition Committee

Disclaimer

This document is intended for use within BC Children's and BC Women's Hospitals only. Any other use or reliance is at your sole risk. The content does not constitute and is not in substitution of professional medical advice. Provincial Health Services Authority (PHSA) assumes no liability arising from use or reliance on this document. This document is protected by copyright and may only be reprinted in whole or in part with the prior written approval of PHSA.

INTRA-PARTUM MANAGEMENT: Woman with unknown HIV status, or HIV risk factors since last test



- * HIV risk factors include:**
- Self-identifies as at risk for HIV
 - Engaged in sex work
 - Injection drug use
 - Sex partner of person infected with HIV or using injection drugs
 - Sexually transmitted infection during pregnancy
 - From a population with a high prevalence of HIV (e.g. recent incarceration or from an HIV-endemic country)

QUESTIONS?

Oak Tree Clinic staff (604-875-2250) are available to provide telephone advice Monday-Friday 08:30-16:30.

After 16:30 and on weekends, contact BC Women's Hospital (604-875-2161) and ask for the Level 1 Obstetrician on call.

- Additional resources:**
- Pre-printed order sets
 - Guide for interpreting test results
 - [Oak Tree Clinic website](#)

ZDV = zidovudine, 3TC = lamivudine, NVP = nevirapine, EIA = enzyme immunoassay, PCR = polymerase chain reaction, EBM = expressed breast milk